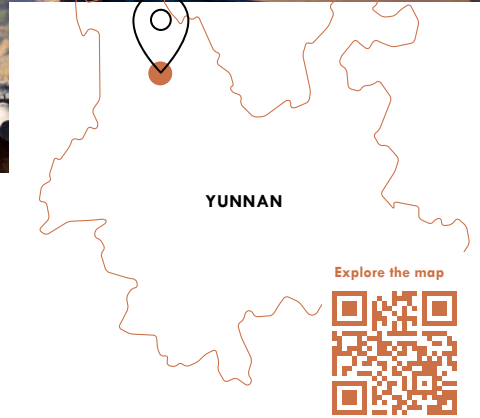


**LUX\*** | **TEA HORSE ROAD  
SANGUSHUI, CHINA**

**A 15-room luxury retreat  
at the door of one of the  
world's oldest living cultures**

Located centrally in mesmerizing Sangushui village, our 15-room luxury retreat is a door to one of the world's oldest living cultures. The conceptually-designed hotel binds contemporary flair with Yunnanese tradition. Think light-flooded rooms with a patchwork view of traditional tiled rooftops and evergreen hills, creature comforts, cuisine that floods the senses and even an outdoor café. LUX\* Tea Horse Road Sangushui is the place to enjoy the pleasures of travelling.



**Accessible by car**  
(45 min/ 45km from  
LUX\* Lijiang)



**Nearest Airport:**  
Lijiang Sanyi Airport  
(1h15 min/ 75km)



**Packing list:** Tennis shoes,  
sunscreen, lip balm,  
mosquito repellent



**Check-in at 2 p.m.  
& check-out at noon**



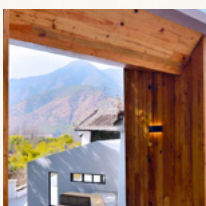
**Chinese,  
English**



**January –  
March**  
Winter 15°C

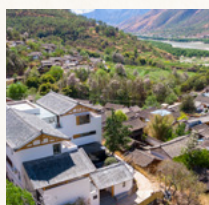
**July –  
September**  
Summer 32°C / Rainy season  
- the rest of the year is dry

**Reasons to go**



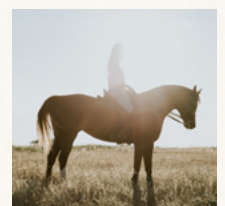
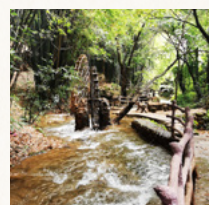
**Chic, contemporary  
design and  
architecture**

**Location at the  
doorstep  
of Sangushue village**



**Café LUX\***

**Access to the  
connecting  
adventure  
park**



**River rafting and  
horse-riding along  
Jinsha River**

## Eat



Building 1

### The Restaurant

We are open all day everyday to serve Chinese and Western favourites, but also regional specialties.

#### Opening hours

All-day dining from 8 a.m. to 9 p.m.

#### Cuisine

Chinese and Local Specialties

### The Tea Lounge

Yunnan is famed for its tea and for good reason. Take a seat and sample the region's best.

Building 2

### The Restaurant

This restaurant is located in its own distinctive style structure. We are open daily and we have a private dining room.

#### Cuisine

Traditional and Modern Chinese

#### Seats

12

### Café LUX\*

Located in a beautifully-designed café with outdoor seating with a view

#### Seats

16

## Sleep



### Junior Suite

45 – 50 m<sup>2</sup> / 3 adults or 2 adults + 1 teen / child

### Superior Room

25 – 30 m<sup>2</sup> / 2 adults

## Relax



### The Courtyard

It's the perfect spot to unwind, read a book, or play some board-games.

### The Library

It's filled with books celebrating our culture and travel.

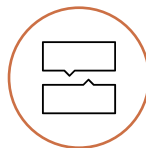
## In the area



- River rafting on Jinsha River
- Shigu Town local market
- First bend of Yangtze River



We accept Visa, Mastercard, American Express, Unionpay, Alipay and Wechat pay



✉ [resa@luxlijiang.com](mailto:resa@luxlijiang.com)  
☎ +86-888-5596666  
🌐 [luxresorts.cn](http://luxresorts.cn)  
📷 [Instagram.com/luxteahorseroad](https://www.instagram.com/luxteahorseroad)

📘 [facebook.com/luxteahorseroad](https://facebook.com/luxteahorseroad)  
📺 [LUXResortsHotels](https://www.youtube.com/channel/UC...)  
📺 茶马道丽世酒店  
🗣️ [LUX\\_Teahorseroad](https://www.tiktok.com/@luxteahorseroad)

## About

LUX\* Tea Horse Road is a unique collection of retreats along the mystical Tea Horse Road, where the journey is the destination

- A once-in-a-lifetime trip for the culturally curious
- Beautifully-designed retreats and hotels
- Access to normally off-limits, collectable experiences
- Curate your own journeys while travelling seamlessly